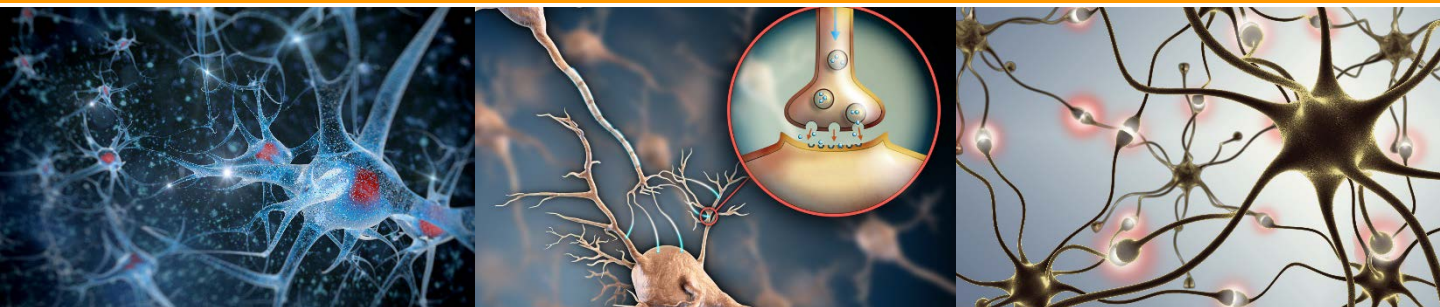


CENTRAL NERVOUS SYSTEM DISEASES



The development of new treatment options for neuropsychiatric diseases is a key priority for Boehringer Ingelheim, evidenced by the innovative work in these areas of both its collaboration partners and the Company's own highly experienced research and development professionals.

Indications:

Neuropsychiatric diseases including:

- Schizophrenia (e.g. negative symptoms and/or cognitive impairment)
- Depression (e.g. treatment-resistant depression)
- Impulsivity disorders (e.g. substance use disorder; obsessive-compulsive disorder; borderline personality disorder).

Specific partnering priorities:

- We are seeking in-licensing and collaborative opportunities at discovery and pre-clinical stages. Early clinical stage opportunities (up to Phase 2) can be considered in exceptional cases.
- Innovative approaches to modulate maladaptive neurocircuits and neural network activity, by modalities with a clear patent positioning and opportunity for differentiation over standard of care.
- Ideally, the proposed therapeutic modality will include a mechanistic link to the above symptom domains/diseases with quantifiable and translational biomarkers.

For more information please contact :

Dr. Namiko Yamashita < namiko.yamashita@boehringer-ingelheim.com >

Dr. Takeshi Kono < takeshi.kono@boehringer-ingelheim.com >