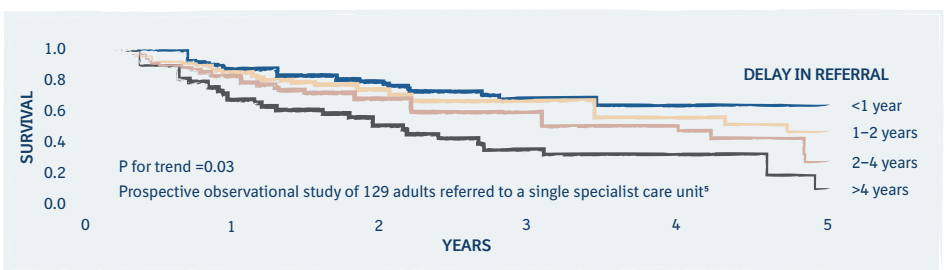
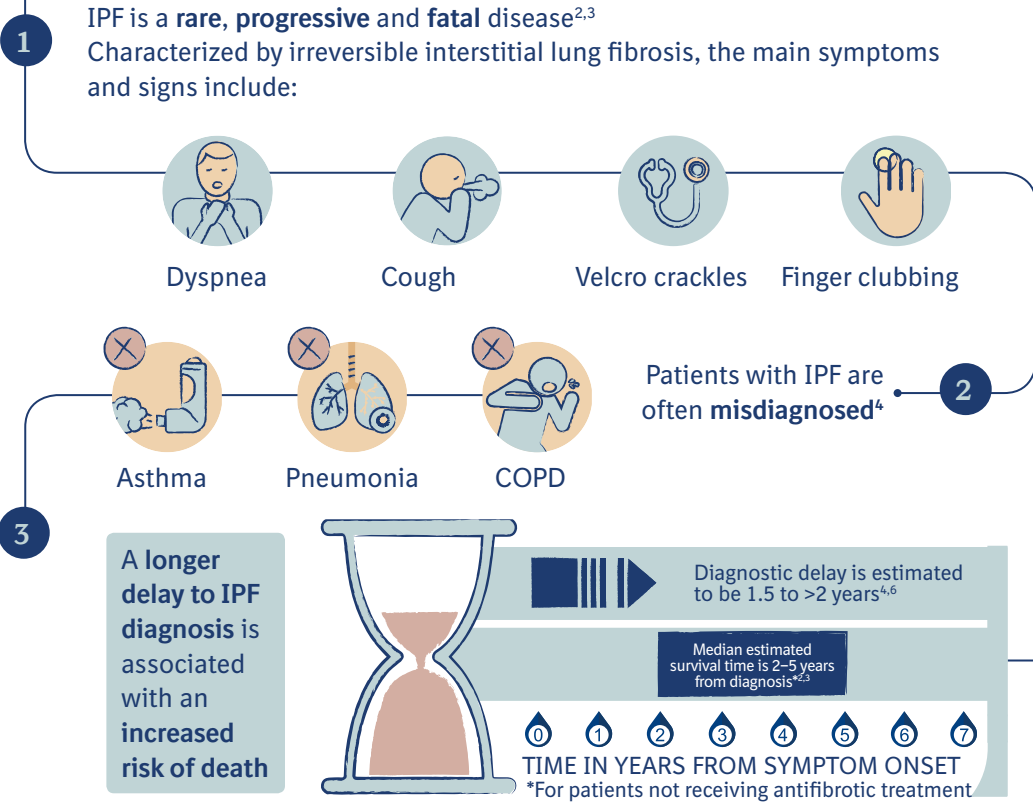
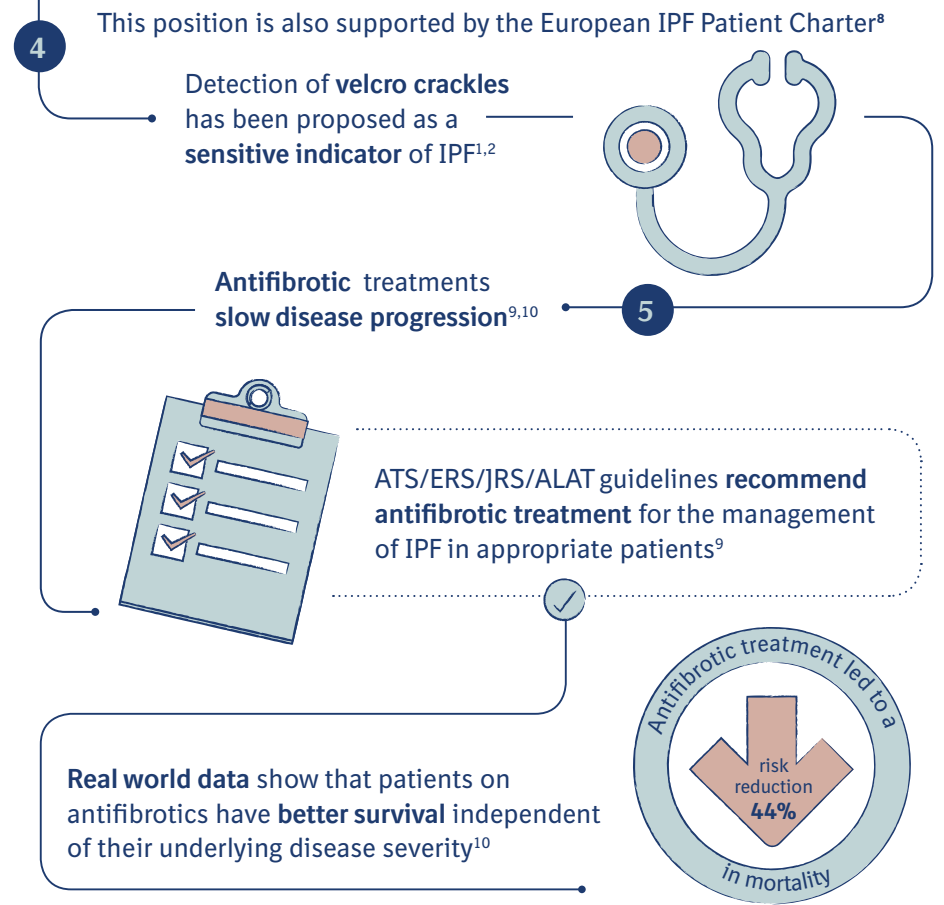


# Importance of early diagnosis and treatment in idiopathic pulmonary fibrosis (IPF)<sup>1</sup>



Reprinted with permission of the American Thoracic Society. Copyright © 2018 American Thoracic Society. Lamas DJ et al. 2011 Delayed Access and Survival in Idiopathic Pulmonary Fibrosis: A Cohort Study. Am J Respir Crit Care Med 184:842-847. The American Journal of Respiratory and Critical Care Medicine is an official journal of the American Thoracic Society.

# Early and accurate detection and intervention is crucial as evidence suggests it can improve outcomes in IPF<sup>1,7</sup>



# Greater benefits are achieved with early interventions in patients with IPF and prompt referral to specialist centers is essential<sup>1</sup>

ATS/ERS/JRS/ALAT: American Thoracic Society/European Respiratory Society/Japanese Respiratory Society/ Latin American Thoracic Association  
 1. Molina-Molina M et al. Exp Rev Res Med 2018;12:537-539; 2. Raghu G et al. Am J Respir Crit Care Med 2011;183:788-824; 3. National Clinical Guideline Centre (UK). Diagnosis and management of suspected idiopathic pulmonary fibrosis: idiopathic pulmonary fibrosis. London: Royal College of Physicians (UK) 2013; 4. Schoenheit G et al. Chron Respir Dis 2011;8:225-231; 5. Lamas D et al. Am J Respir Crit Care Med 2011;184:842-847; 6. Cosgrove G et al. BMC Pulm Med 2018;18:9; 7. Maher T et al. BMC Pulm Med 2017;17:124; DOI 10.1186/s12916-017-0842-4; 8. Bonella F et al. Eur Respir J 2016;47:597-606; 9. Raghu G et al. Am J Respir Crit Care Med 2015;192:e3-e19; 10. Jo HE et al. Eur Respir J 2017;49:1601592.  
 PC-CDE-100979 Date of preparation August 2018