

# COLORECTAL CANCER

For media outside UK and US

Colorectal cancer is a cancer in the colon or rectum (parts of the large intestine)

Colorectal cancer is the third most common cancer in the world<sup>1</sup>



LUNG CANCER

1.8 million\*

\*New cases in 2012



BREAST CANCER

1.67 million\*



COLORECTAL CANCER

1.36 million\*



More than 9 out of 10 colorectal cancers are diagnosed in people aged 50 or over<sup>3</sup>

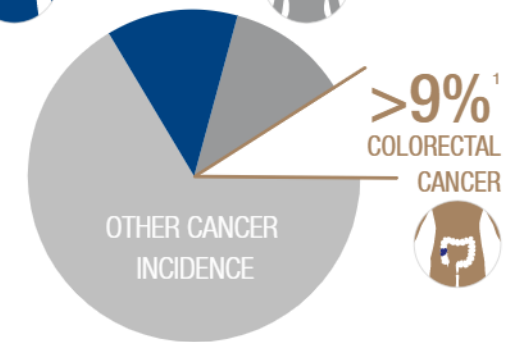
Prognosis is very poor for patients with metastatic colorectal cancer with only 10% of patients surviving for more than five years after diagnosis<sup>2</sup>



12.9% LUNG CANCER



11.9% BREAST CANCER

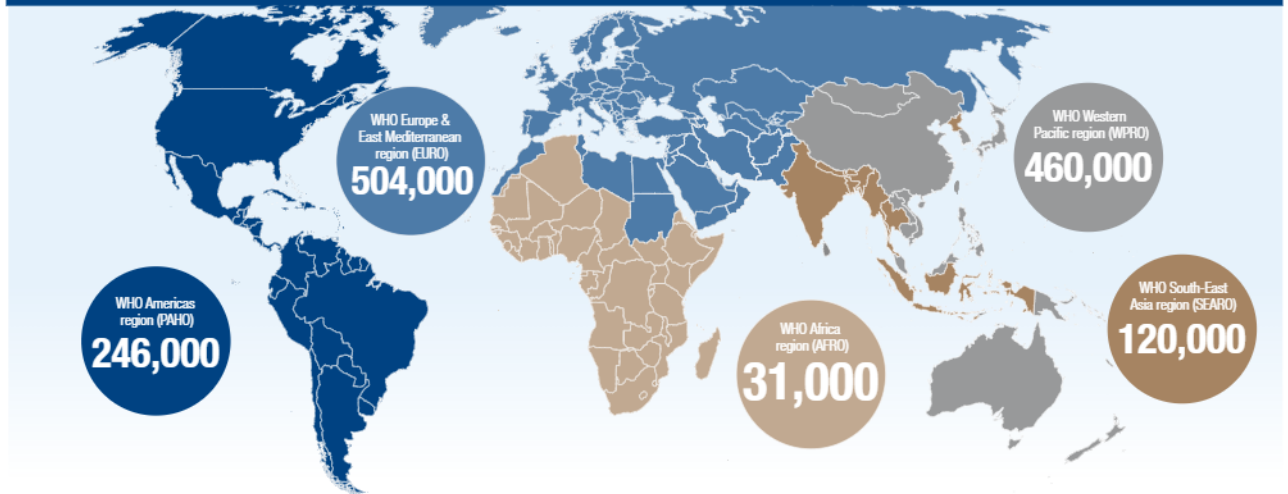


Worldwide, approximately **694,000** deaths are attributable to colorectal cancer each year<sup>1</sup>

Typical symptoms include:<sup>4</sup>

- change in bowel habits
- blood in stools
- abdominal pain
- weight loss
- cramps
- bloating
- anaemia

Incidence of colorectal cancer, per year, per region (as specified by WHO)<sup>1</sup>



1. GLOBOCAN 2012. Available at: [http://globocan.iarc.fr/Pages/fact\\_sheets\\_cancer.aspx](http://globocan.iarc.fr/Pages/fact_sheets_cancer.aspx) (Last accessed August 2014)

2. Van Cutsem E, Borrás JM, Castells A *et al*. Improving outcomes in colorectal cancer. Where do we go from here? *Eur J Cancer*. 2013 Jul; **49**(11): 2476–85

3. Cancer Research UK. Available at <http://www.cancerresearchuk.org/cancer-help/type/bowel-cancer/about/risks/high-risk-groups-for-bowel-cancer> (Last accessed May 2016)

4. Cancer Research UK. Available at <http://www.cancerresearchuk.org/about-cancer/type/bowel-cancer/about/bowel-cancer-symptoms> (Last accessed May 2016)



LET'S WORK

Boehringer Ingelheim

